



Edition : 2.0
Date: (09/24)

Instruction Manual

HYDRAULIC VEHICLE POSITIONING JACKS VJ-680

Order Code: (A332)

1.0 MACHINE DETAILS

MACHINE	<input type="text" value="Vehicle Positioning Jacks"/>
MODEL NO.	<input type="text" value="VJ-680"/>
SERIAL NO.	<input type="text"/>
DATE OF MANF.	<input type="text"/>

DISTRIBUTED BY




www.machineryhouse.com.au
www.machineryhouse.co.nz



NOTE:

In order to see the type and model of the machine, please see the specification plate. Usually found on the back of the machine. See example (Fig.1)

	
PRODUCT SPECIFICATIONS	
Model: VJ-680	Nett Weight: 19kg
Capacity: WLL 680Kg	MFG Date:
Serial No:	<input type="text"/>
www.machineryhouse.com.au www.machineryhouse.co.nz	
<small>Made in China</small>	

(Fig.1)

2.0 SPECIFICATIONS

Order Code	A332
MODEL	VJ-680
Operation	Foot Pedal - Hydraulic
Lifting Capacity per Jack	680kg
Construction	All Steel Construction. Aluminium Rollers, Rubber O-rings
Maximum Tyre Width	270mm
Roller Opening - Min-Max	350 - 620mm
Ram Travel	270mm
Ram Diameter	18mm
Nett Weight per Jack	18.5kg



WARNING

Always check the capacity of the Vehicle being lifted. Exceeding the capacity of the jacks may result in sudden breakage that may injure the operator or bystanders.



WARNING

*Serious injury or death can result from using this machine **BEFORE** understanding its controls and related safety Information. **DO NOT** operate, or allow others to operate, the machine until the information is understood.*



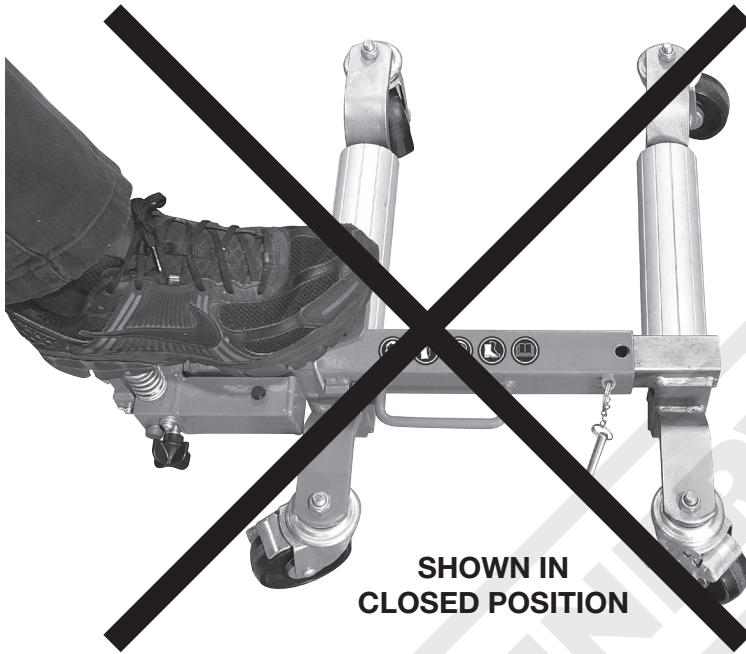
WARNING

It is impossible to cover all possible hazards Every workshop environment is different. These are designed as a guide to be used to compliment training and as a reminder to users prior to equipment use. Always consider safety first, as it applies to the individual working conditions.

3.0 WARNING - DO NOT OVERLOAD PUMP

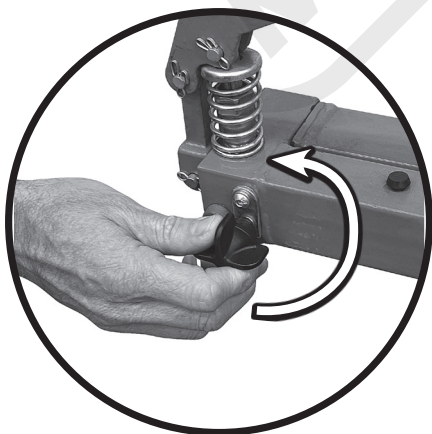
 **WARNING**

DO NOT PUMP THE LEVER WHEN CLOSED



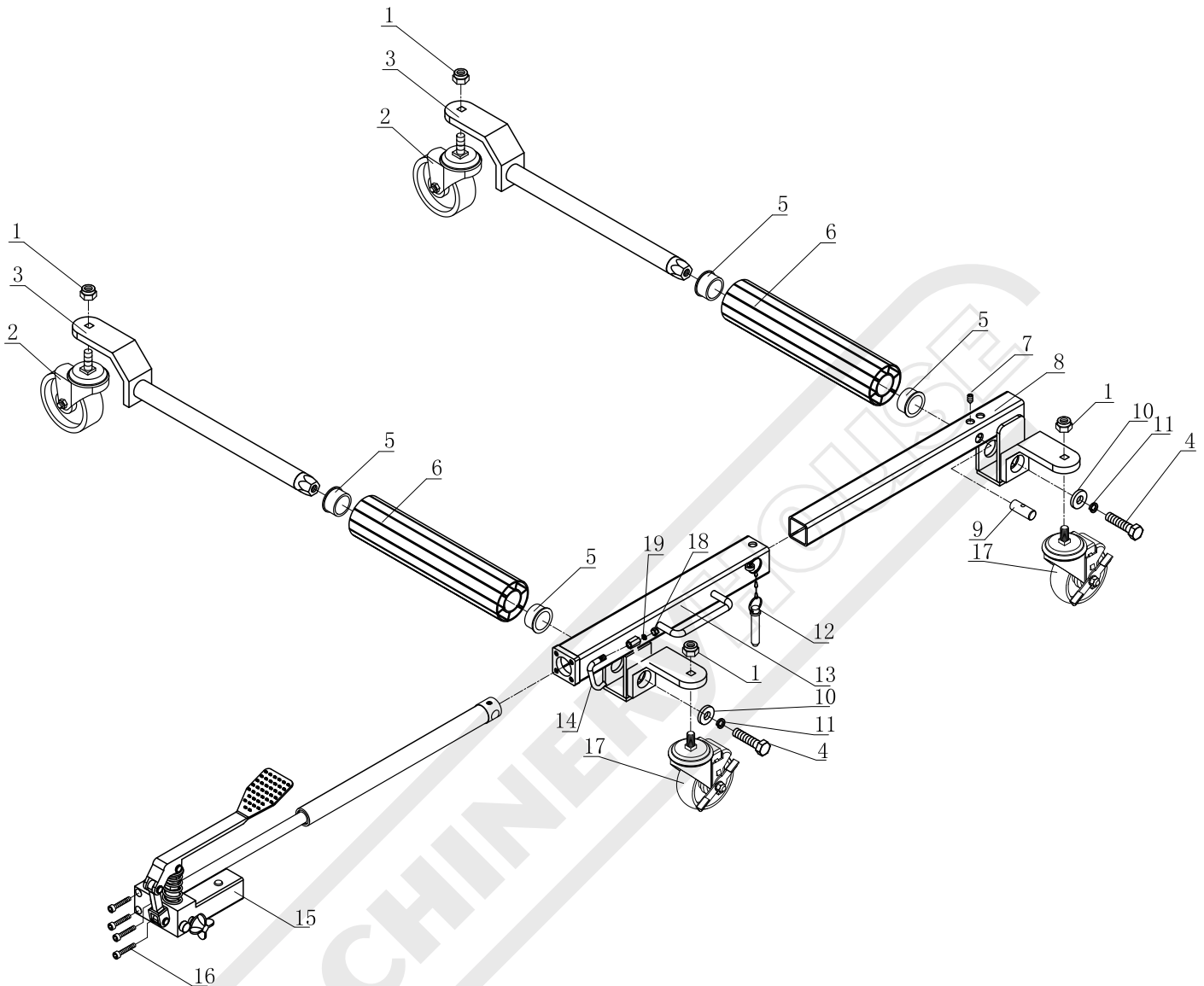
**JACKS ARE SUPPLIED
IN THE CLOSED POSITION.**

**DO NOT PUMP THE LEVER
WHEN THE ROLLERS ARE
FULLY CLOSED, AS IT WILL
OVERLOAD THE
HYDRAULIC PUMP.**



**TO OPEN THE ROLLERS
TURN THE PRESSURE VALVE ANTI-CLOCKWISE
THEN PULL ROLLERS APART.**

4.0 PARTS LIST AND ASSEMBLY DIAGRAM

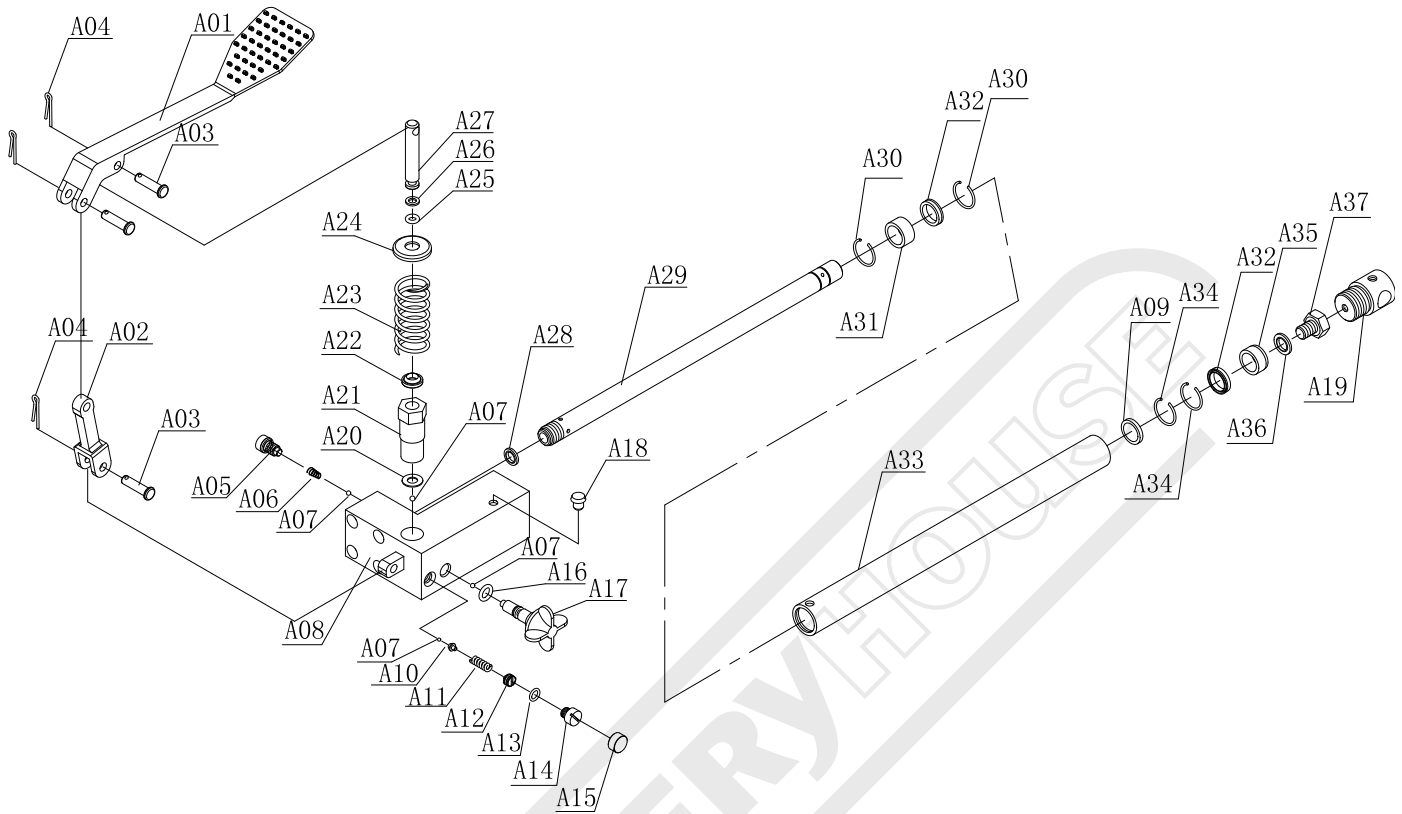


Part No.	Description	QTY
1	Nut	4
2	Caster	2
3	Rod Assembly	2
4	Bolt	2
5	Roller Race Way (Nylon)	4
6	Roller	2
7	Screw	1
8	Inner Body Axle Assembly	1
9	Pin	1
10	Washer	2

Part No.	Description	QTY
11	Lock Washer	2
12	Safety Pin	1
13	Outer Body Axle Assembly	1
14	Pin	1
15	Pump Assembly	1
16	Screw	4
17	Castor with Brake	2
18	Nut	1
19	O-Ring	1

NOTE: Some parts are listed and shown for illustration purposes only and are not available individually as replacement parts.

5.0 HYDRAULIC JACK PARTS LIST AND ASSEMBLY DIAGRAM



Part No.	Description	QTY
A01	Pedal	1
A02	Connector	1
A03	Pin	3
A04	R-pin	3
A05	Hex Screw	1
A06	Spring	1
A07	Ball	4
A08	Pump Body	1
A09	Seal Ring	1
A10	Base	1
A11	Spring	1
A12	Screw	1
A13	O-ring	1
A14	Screw	1
A15	Cover	1
A16	O-ring	1
A17	Release Valve	1
A18	Oil Plug	1
A19	Connecting Base	1

Part No.	Description	QTY
A20	Seal Ring	1
A21	Pump Cylinder	1
A22	Dust Cover	1
A23	Spring	1
A24	Spring Cover	1
A25	O-ring	1
A26	Retaining Ring	1
A27	Piston	1
A28	Seal Ring	1
A29	Cylinder	1
A30	Cir-clip	2
A31	Bushing	1
A32	Seal Ring	2
A33	Pump Assembly	1
A34	Cir-clip	2
A35	Retaining Ring	1
A36	Seal Ring	1
A37	Screw	1

6.0 APPLICATION

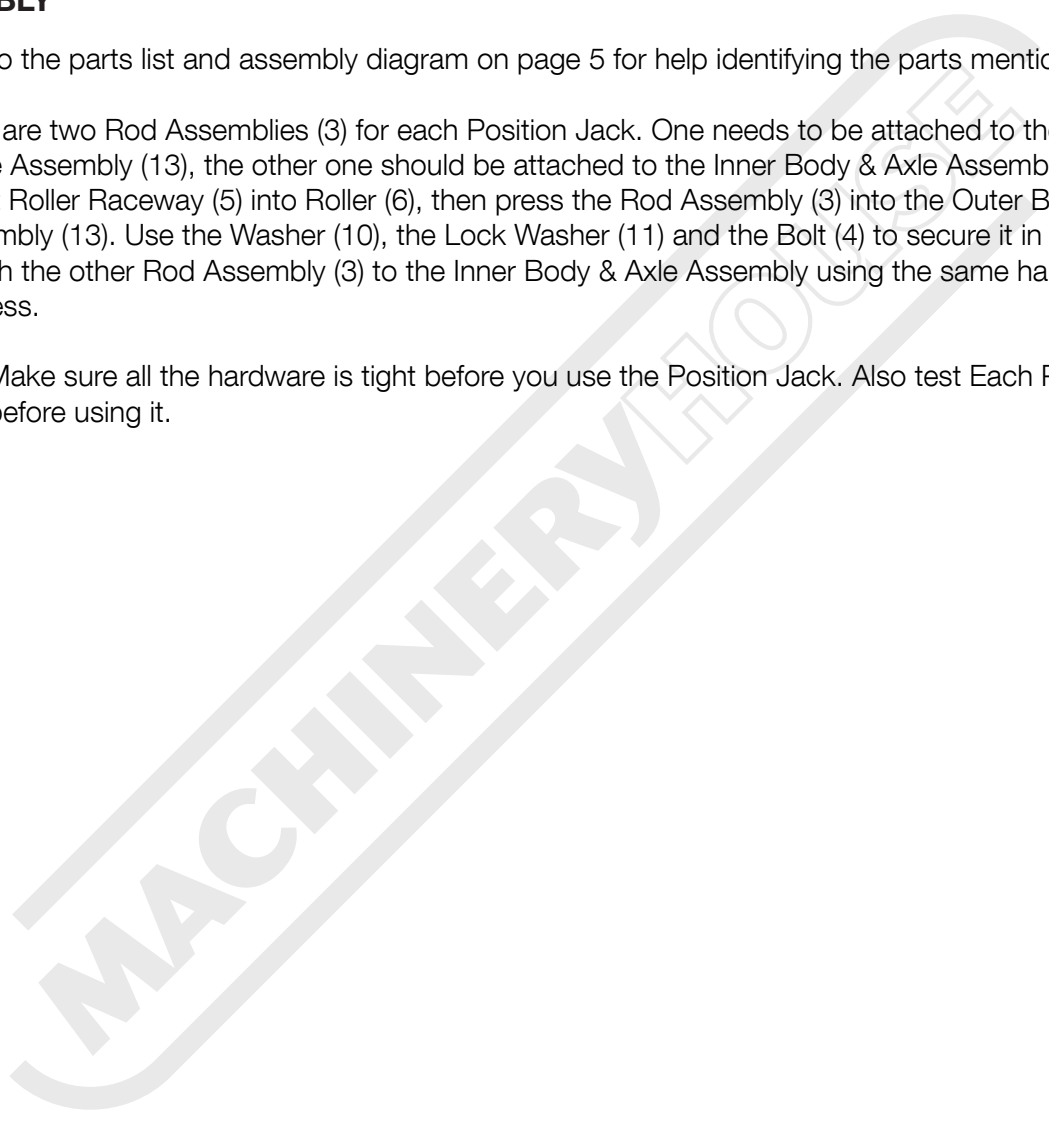
Use four of the Vehicle Positioning Jacks to efficiently maneuver a parked vehicle in tight spaces. Designed to fit most cars and lightweight trucks. A vehicle resting on four of the Vehicle Positioning Jacks can be pushed forward, backward and even sideways.

7.0 ASSEMBLY

NOTE: Turn to the parts list and assembly diagram on page 5 for help identifying the parts mentioned below.

1. There are two Rod Assemblies (3) for each Position Jack. One needs to be attached to the Outer Body & Axle Assembly (13), the other one should be attached to the Inner Body & Axle Assembly (8).
2. Insert Roller Raceway (5) into Roller (6), then press the Rod Assembly (3) into the Outer Body & Axle Assembly (13). Use the Washer (10), the Lock Washer (11) and the Bolt (4) to secure it in place tightly. Attach the other Rod Assembly (3) to the Inner Body & Axle Assembly using the same hardware and process.

WARNING: Make sure all the hardware is tight before you use the Position Jack. Also test Each Position Jack before using it.

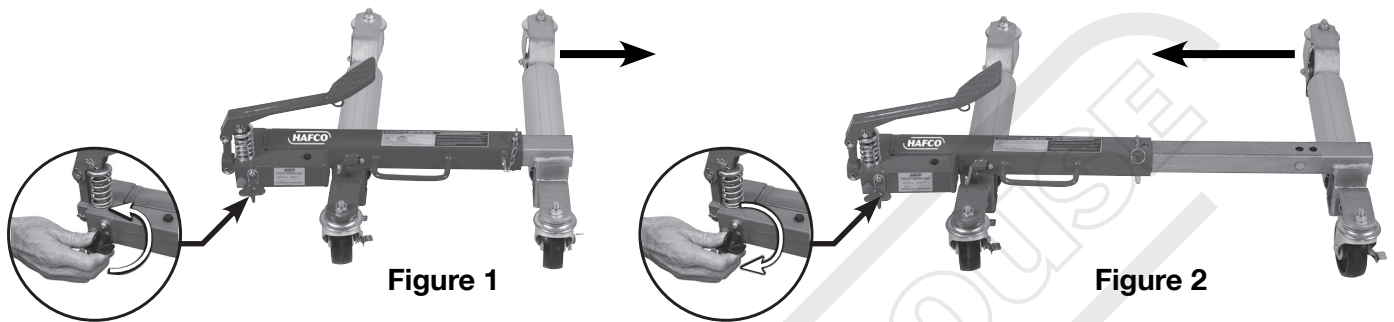


8.0 OPERATION

WARNING: Before operating the Position Jack read the bleeding instructions on page 9.

WARNING: Check the oil level Before operating the Position Jack Instructions on page 9.

1. First expand the space between the Rollers (6). Turn the Release Valve (A17) counter clockwise then spread the Rollers (6) apart from each other. After Pulling the Rollers (6) apart turn the Release Valve (A17) all the way clockwise. Next slide the Position Jack around the tire (as shown in Figure 1 & 2).



2. To raise the tire, put your foot on top of the Foot Pedal (17) and press it up and down. The Rollers (6) will move together and lift the tire off the ground. After raising the tire, insert the Lock Pin (12) in the hole in the Outer Body and Axle Assembly (13) (as shown in Figure 3 & 4).

NOTE: The Rollers (6) will not move together when you Press up and down on the Foot Pedal (17) unless the Release Valve is turned completely to the right (see Figure 2).



Figure 3



Figure 4

3. To lower the tire, turn the Release Valve (A17) about 1/2 revolution counter clockwise. The weight of the vehicle on the tire will spread the Roller (6) apart allowing you to pull the Wheel Dolly away from the tire.

WARNING: Do not turn the Release Valve completely counter clockwise. Doing so will remove it allowing oil to spill out.

9.0 BLEEDING INSTRUCTIONS

Purging the air out from the system when using for the first time or have not used it for longtime, and found it worked in low efficiency.

1. Turn the Release Valve 1-1/2 revolutions counter clockwise.
2. Press up and down on Foot Pedal more than 10 times quickly which can purge the air from the system.
3. Top off with a quality hydraulic fluid if the hydraulic system has not enough oil to operate the unit, Replace the Oil Fill Plug.

10.0 LOCKING DOWN THE FOOT PEDAL

When not in use, locking the pedal tightly. Press the Foot Pedal all the way down, then swing the Pedal Lock Assembly (14) up and into the hole on the bottom of the foot pedal (see figure 5).

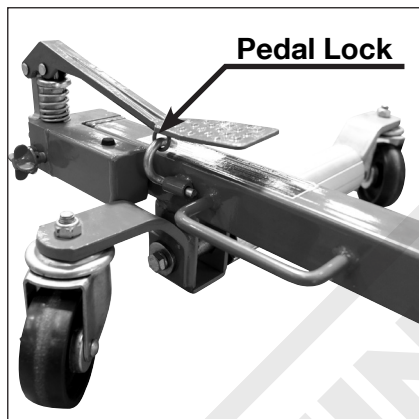


Figure 5

11.0 INSPECTION, MAINTENANCE AND CLEANING

1. Before each use, inspect the general condition of the Position Jack. Check for cracking, bending, wheel damage and any other condition that may affect safe operation. If a problem occurs with the Position Jack immediately discontinue its use; never use a damage Position Jack.
2. To clean, wipe a damp cloth. You may use a mild detergent.

12.0 CHECKING OIL LEVEL

- # Expand wheel support rollers all the way out.
- # Remove Black Rubber Stopper (Found on Oil Reservoir under foot pedal)
- # Check oil level. Should be approximately 10mm under top of Reservoir.
- # Top up with a Quality Hydraulic Fluid as needed.
- # Refit Black Rubber Stopper.

NOTES:

Lined area for notes, consisting of 20 horizontal lines. A large, light gray watermark reading "MACHINERYHOUSE" is oriented diagonally across the page.

WARNING

General Machinery Safety Instructions

Machinery House
requires you to read this entire Manual before using this machine.

- 1. Read the entire Manual before starting machinery.** Machinery may cause serious injury if not correctly used.
- 2. Always use correct hearing protection when operating machinery.** Machinery noise may cause permanent hearing damage.
- 3. Machinery must never be used when tired, or under the influence of drugs or alcohol.** When running machinery you must be alert at all times.
- 4. Wear correct Clothing.** At all times remove all loose clothing, necklaces, rings, jewelry, etc. Long hair must be contained in a hair net. Non-slip protective footwear must be worn.
- 5. Always wear correct respirators around fumes or dust when operating machinery.** Machinery fumes & dust can cause serious respiratory illness. Dust extractors must be used where applicable.
- 6. Always wear correct safety glasses.** When machining you must use the correct eye protection to prevent injuring your eyes.
- 7. Keep work clean and make sure you have good lighting.** Cluttered and dark shadows may cause accidents.
- 8. Personnel must be properly trained or well supervised when operating machinery.** Make sure you have clear and safe understanding of the machine you are operating.
- 9. Keep children and visitors away.** Make sure children and visitors are at a safe distance for your work area.
- 10. Keep your workshop childproof.** Use padlocks, Turn off master power switches and remove start switch keys.
- 11. Never leave machine unattended.** Turn power off and wait till machine has come to a complete stop before leaving the machine unattended.
- 12. Make a safe working environment.** Do not use machine in a damp, wet area, or where flammable or noxious fumes may exist.
- 13. Disconnect main power before service machine.** Make sure power switch is in the off position before re-connecting.
- 14. Use correct amperage extension cords.** Undersized extension cords overheat and lose power. Replace extension cords if they become damaged.
- 15. Keep machine well maintained.** Keep blades sharp and clean for best and safest performance. Follow instructions when lubricating and changing accessories.
- 16. Keep machine well guarded.** Make sure guards on machine are in place and are all working correctly.
- 17. Do not overreach.** Keep proper footing and balance at all times.
- 18. Secure workpiece.** Use clamps or a vice to hold the workpiece where practical. Keeping the workpiece secure will free up your hand to operate the machine and will protect hand from injury.
- 19. Check machine over before operating.** Check machine for damaged parts, loose bolts, Keys and wrenches left on machine and any other conditions that may effect the machines operation. Repair and replace damaged parts.
- 20. Use recommended accessories.** Refer to instruction manual or ask correct service officer when using accessories. The use of improper accessories may cause the risk of injury.
- 21. Do not force machinery.** Work at the speed and capacity at which the machine or accessory was designed.
- 22. Use correct lifting practice.** Always use the correct lifting methods when using machinery. Incorrect lifting methods can cause serious injury.
- 23. Lock mobile bases.** Make sure any mobile bases are locked before using machine.
- 24. Allergic reactions.** Certain metal shavings and cutting fluids may cause an allergic reaction in people and animals, especially when cutting as the fumes can be inhaled. Make sure you know what type of metal and cutting fluid you will be exposed to and how to avoid contamination.
- 25. Call for help.** If at any time you experience difficulties, stop the machine and call your nearest branch service department for help.

WARNING

Vehicle Positioning Jacks Safety Instructions

Machinery House
requires you to read this entire Manual before using this machine.

- 1. Application.** Vehicle Positioning Jacks are designed for manually moving the vehicle by hand only and must not be used to lift vehicles for any other reason such as 1. Wheel maintenance, 2. Under body maintenance work or 3. Storage of vehicle. Vehicle wheels must remain on the ground if not being lifted, moved or lowered by jacks.
- 2. Load Requirement.** Refer to your vehicle service manual to verify that the vehicle weight does not exceed the maximum Vehicle Positioning Jacks load rating. Do not over load the Vehicle Positioning Jacks capacity.
- 3. Condition.** The Vehicle Positioning Jacks must be maintained for a proper working condition. Never operate a Vehicle Positioning Jacks that has low oil levels, damaged or worn parts. Scheduled routine maintenance should be performed on a scheduled basis. Check frame, welds and wheels for cracks or damage. Replace if necessary.
- 4. Crushing Hazard.** Never place any part of your body under the Vehicle Positioning Jacks, or under a lifted load. Always mount all four jacks at the appropriate points under the wheels. Never move the vehicle without the lock pins installed. Otherwise serious injury can occur.
- 5. Work area hazards.** Pay attention to other persons in the area and know what is going on around the area to ensure unintended accidents.
- 6. Wheel Size Limit.** Do not operate over the recommended Vehicle Positioning Jacks capacity.
- 7. Warning Labels.** Take note of any warning labels on the Vehicle Positioning Jacks and do not remove them.
- 8. Locking Pins.** Before moving vehicle ensure that the locking pins are in place. When finished moving vehicle remove locking pins, make sure area is clear from persons and release valve to lower the vehicle.
- 9. Moving Vehicle.** Jacks are designed for manually moving the vehicle by hand only. Only operate vehicle Positioning Jacks if you are strong enough to control and stop it when it is moving.
- 10. Level Surface.** Only use this Vehicle Positioning Jacks on a hard level surface capable of sustaining the combined load. Do not attempt to push vehicle over uneven ground or obstacles. Unanticipated motion can occur once load is lifted from surface.
- 11. Pinching.** Prevent pinching by releasing pressure in the ram when not in use.
- 12. Other Hazards.** Never attempt to start or run an engine while using Vehicle Positioning Jacks. Never allow children to play on Vehicle Positioning Jacks while in use or in storage.
- 13. Call for help.** If at any time you experience difficulties, stop and call your nearest branch service department for help.

PLANT SAFETY PROGRAM

NEW MACHINERY HAZARD IDENTIFICATION, ASSESSMENT & CONTROL

Vehicle Positioning Jacks

Developed in Co-operation Between A.W.I.S.A and Australia Chamber of Manufactures
 This program is based upon the Safe Work Australia, Code of Practice - Managing Risks of Plant in the Workplace (WHSA 2011 No10)

Item No.	Hazard Identification	Hazard Assessment	Risk Control Strategies <small>(Recommended for Purchase / Buyer / User)</small>
B	CRUSHING	HIGH	Ensure use Jacks on even, level & solid ground. Ensure load is secure on jacks and locking pins are in place when in use. Keep body clear from under Vehicle and Jacks at all times. Do not exceed maximum lifting capacity of Jacks. Always check around load before lowering. Check Jacks for cracks etc, prior to lifting. Ensure load is lowered smoothly. Wear safety boots. Vehicle Positioning Jacks are designed for manually moving the vehicle by hand only and must not be used to lift vehicles for any other reason such as 1. Wheel maintenance, 2. Under body maintenance work or 3. Storage of vehicle. Vehicle wheels must remain on the ground if not being lifted, moved or lowered by jacks.
D	SHEARING	MEDIUM	Keep body parts clear between moving components of Jacks when lowering.
J	SLIPPING, TRIPPING, & FALLING	LOW	Avoid uneven or slippery surfaces when moving trolley under load.

Plant Safety Program to be read in conjunction with manufactures instructions



www.machineryhouse.com.au



www.machineryhouse.co.nz

Authorised and signed by:

Safety officer:

Manager:

Revised Date: 11th June 2013



ENVIRONMENT PROTECTION

Recycle unwanted materials instead of disposing of them as waste. All tools, accessories and packaging should be sorted, taken to a recycling centre and disposed of in a manner which is compatible with the environment. When the product becomes completely unserviceable and requires disposal, drain any fluids (if applicable) into approved containers and dispose of the product and fluids according to local regulations.

Imported by

HARE & FORBES
MACHINERYHOUSE

Australian Distributor

Hare & Forbes
Machineryhouse
Sydney - Melbourne
Adelaide - Brisbane - Perth

Ph: 1300 202 200
www.machineryhouse.com.au

MACHINERYHOUSE

New Zealand Distributor

Machineryhouse
Auckland
Christchurch

Ph: 0800 142 326
www.machineryhouse.co.nz